

10 + 0 - 5

a = b + (c > d) * e

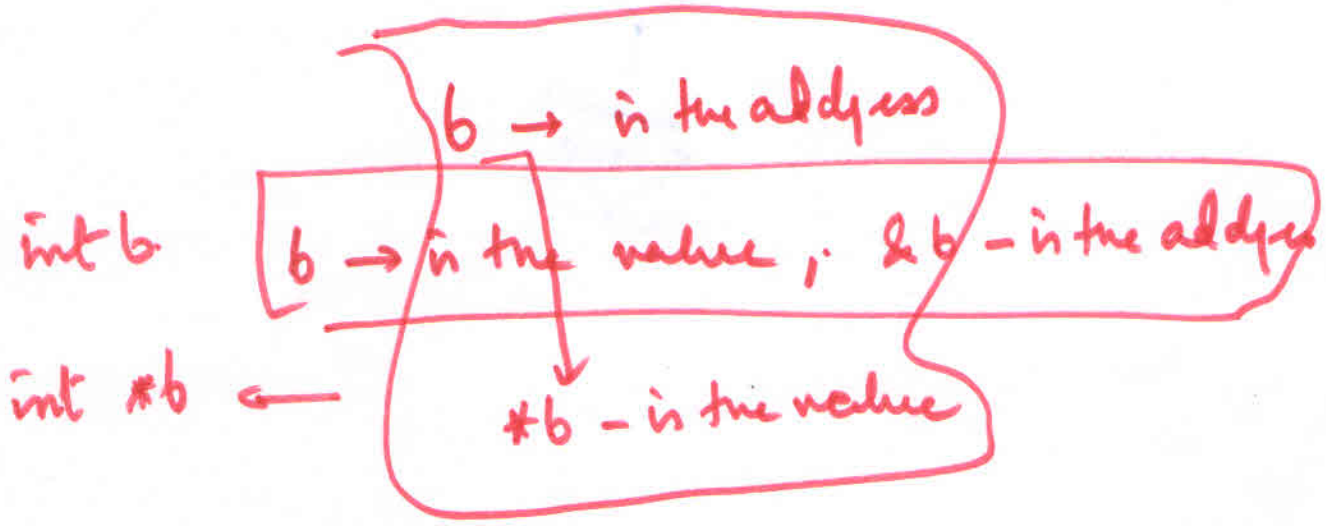
Is it a legal statement.

- b = 10
- c = 10
- d = 50
- e = 10 / 5

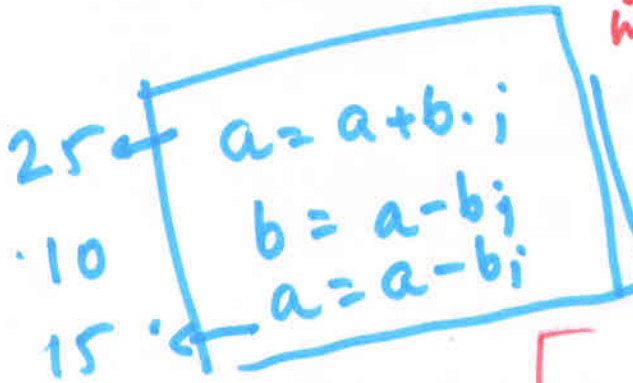
a = 0 - false.

+ (!a). → int a = 10;

c = !a. = -10? = 0



a, b



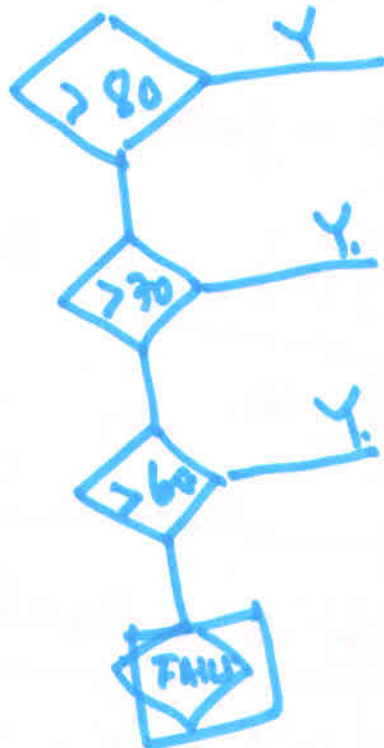
```
int c = 0 ;  
int a = 10 ;  
int b = 15 ;
```

```
c = a ;  
a = b ;  
b = c ;
```

```
c = 10  
a = 15  
b = 10
```

```
printf("at a = %d, b = %d", a, b);
```

b = 10
a = 15



```

for
int main()
{
    int a, b;
    scanf("%d %d", &a, &b);
    if (a > b)
        printf("A = %d is larger", a);
    else
        printf("B = %d is larger", b);
}

```

if $a = 10$; $b = 21$
 then b is "very" ~~greater than~~ large

```

if (a > b)
{
    if (a > 200)
        printf("A = %d is very large", a);
    else
        printf("A = %d is large", a);
}

```

if (a > b).

```
{ printf("A = %d" in "a");
```

```
  if (a > 2b).
```

```
    printf("very");
```

```
    printf("large");
```

```
}
```

if ((x > y) && (x > z)).

```
  printf("x = %d is the largest", x);
```

else if ((y > x) && (y > z))

```
  printf("y = %d is the largest", y);
```

else if ~~((z > x) && (z > y))~~.

```
  printf("z = %d is the largest", z);
```

x = y; z <

```
if ((x > y) || (y > x)).
```

```
  printf("x = y")
```



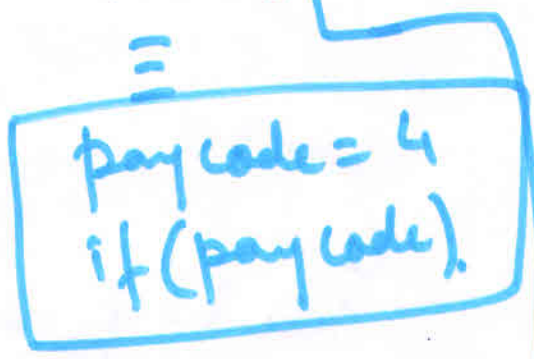
```

if (!((x > y) && (y > x)))
{
    if ((x > z) || (z > x))
    printf("x=y=z=%.d", x);
    // else if (x > z)
    printf("x=y=%.d", x);
    else
    printf("z=%.d", z);
}

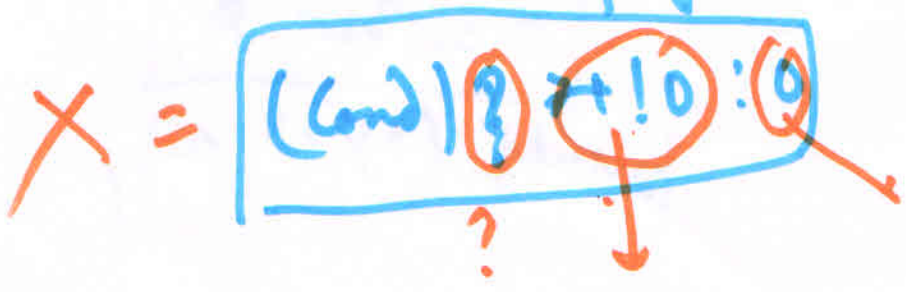
```



```
if (pay code = 4).
```



```
if (pay code = pay code + 3).
    pay code = 4
```



$z = (x > y) ? x : y;$

no - 0-4 → less than 5
5-9 → less than 10
else → this is a very large number.

switch ~~case~~ (x).

Case 1:

Case 2:

Case 3:

Case 4: printf("less than 5");
break;

Case 5:

Case 6:

Case 7:

Case 8:

Case 9: printf("less than 10");
break;

default ("this is a very large number");

1.

$a = 32 + 'A';$

printf("%.c", a);